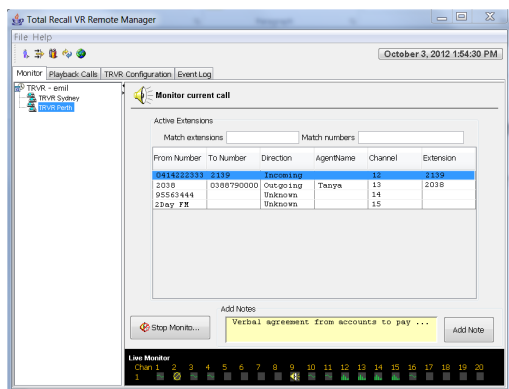




linX Essence



Cost-Effective Audio Logging and Call Recording Systems

VoIP : RTP : RoIP: Consoles : DMR

High Capacity : Cost-Effective : Incredible Flexibility



Total Recall VR LinX Essence

*Next-Generation IP
Voice Logging Recorder.
Powerful & Flexible Solution in
an Incredibly Small Package.*



Total Recall VR LinX Essence is the next generation of voice logging recorders from Prolancer. Combining the latest hardware technology with proven Total Recall VR call recording software and the power of CentOS Linux, Total Recall VR LinX Essence is the powerful and reliable voice logging solution for now and into the future.

Available with a custom LCD and keypad control panel or PC-control only, this Tiny-Box call voice logging recorder supports up to 60 simultaneous VoIP recording channels, with unmatched on-board call storage and functionality for a system of this size.

- ✓ 60 Simultaneous VoIP/RTP/DMR Channels;
- ✓ Seamless integration with major telephony, radio and console systems, including Tait, Hytera and Omnitronics.
- ✓ Up to 600,000 Hours On-board storage SATA HDD.
- ✓ SSD Hard Disk Drive option for even better performance and reliability, especially for vehicle mounted installations.
- ✓ Archive to USB devices and Network Storage (NAS).
- ✓ Optional archive to external Blu-ray/DVD drive.
- ✓ 66.1 (H) x 200 (W) x 147 (D) mm.
- ✓ Optional custom LCD and Keypad control panel, suited to Emergency Services or other rapid-response users.
- ✓ Convenient Remote Management and Record on Demand (PCI DSS compliant) PC applications included.
- ✓ Optional PC software packages for advanced audio search, incident reconstruction, archive management and more.
- ✓ Used in some of the most demanding environments worldwide: Military, Vehicle-Mounted, Air Traffic Control recording (ATC), major Emergency Services (E-911) and more...



Total Recall VR - The **Total** Solution to your Voice Logging Requirements

Typical Total Recall VR LinX Clients:

Emergency Services

Police Dispatch • Ambulance • Coastal Patrol • Fire Brigades

Military & Government

In-Vehicle Recording • Mobile Ops Units • Departmental Recording

Transport & Infrastructure

Air Traffic Control • Intra-Airport Communications • Rail & Metro Comms

Enterprise & Call Centre

Finance • Legal • Call Centres • Trading Desks • PCI DSS Compliant

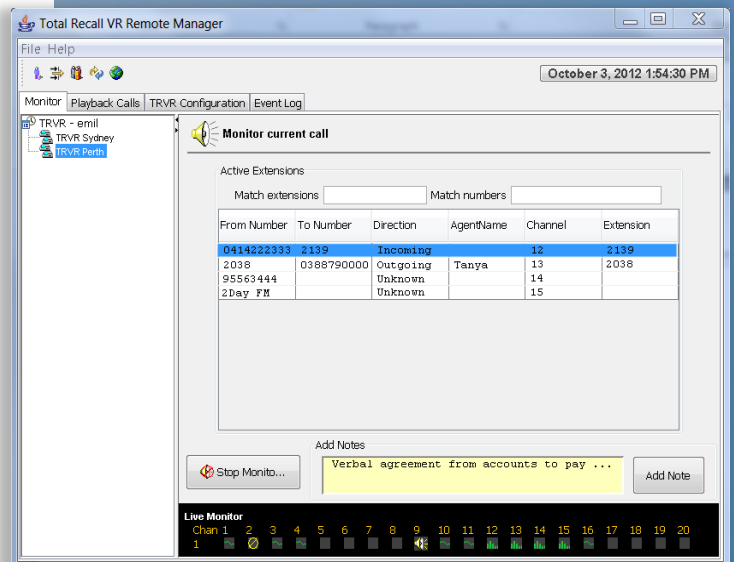
And many more...

Reliability & Resilience Features

- ✓ Platform based on the latest Intel hardware, and Enterprise Linux OS – built for 24/7 reliability in the toughest conditions.
- ✓ SNMP Alarm Integration by TCP/IP.
- ✓ Alerts & alarms viewable directly from our Remote Manager PC software.
- ✓ Tamper-proof audio file format.
- ✓ Total user login security control – access can be restricted to a single channel, or to specific software functions.
- ✓ Record-on-Demand (software or DTMF controlled) for authorised users. PCI DSS compliant.

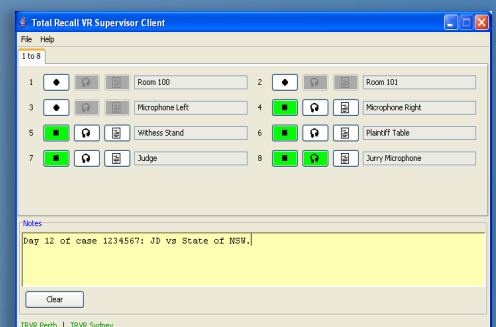
Remote Manager PC App

Total Recall VR Remote Manager, included with unlimited installation licences as part of your call recording solution, provides powerful configuration, monitoring, search, replay, archive and management functions: all from the comfort of your PC!



Optional Advanced PC Apps

Our optional advanced PC apps provide highly configurable search & replay on TRVR systems and archives, multi-track waveform replay of calls, centralised continuous network archiving from one or multiple TRVR systems and/or simplified archive integrity checks & repair. Contact us (or your local TRVR reseller) for more information!



Technical Specifications – Total Recall VR LinX Essence and LinX Essence GUI

System Platform	Non-proprietary, turn-key audio recording and call logging appliance. Embedded enterprise Linux operating system. SQL Database.
Security	Completely Administrator configurable per user, to channel and function level.
Hardware Platform	Industrial motherboard with 64bit Intel CPU
On-board System Control	(LinX Essence GUI Only) 10.1" LCD Screen and custom backlit keypad. Included with your LinX GUI purchase.
Remote System Control	Remote Manager PC software. Included with unlimited installation licences. Connect to the Total Recall VR LinX system via LAN/WAN/VPN or directly via crossover network cable.
PC Requirements for Total Recall VR PC Apps	Windows Vista, 7 or 8 (32 or 64 bit). 100GB Free HDD Space. 512MB RAM. Display that supports minimum 1024x768 resolution. Sound system (including speakers or headphones). Minimum 10mbps TCP/IP network interface. CD/DVD/Blu-ray optical drive. USB 2.0 port.
Audio Controls	Start, Stop, Pause, Fast Forward, Fast Reverse.
Configuration Utilities	Comprehensive system configuration via on-board Graphical User Interface (LinX Essence GUI only) , and via Remote Manager PC Software (LinX Essence and LinX GUI)
Audio Characteristics	Secure, proprietary format. HQVQ, 8000Hz, 7.9 Kbps, mono; SPEEX Q8, 8000Hz, 64Kbps, mono; G.711a-law, 8000Hz, 64Kbps, mono; G.711u-law, 8000Hz, 64Kbps, mono.
Recording Activation	SIP Session, H.245 Call; RTP stream (Unicast/Multicast); Tait VRP Session; Hytera DMR Session
Network	2 x 10/100/1000 Mbps Ethernet Ports. SMDR Interface via TCP/IP
Time Synchronisation	Network Time Protocol (NTP) via TCP/IP
VoIP Recording Interface	Passive recording via port mirroring to a range of SIP and H.323 based PaBXs, and SIP trunks; SIP, H.323, Unicast & Multicast RTP stream recording via SPAN Port; Active SIP recording.
Channel Capacities	VoIP/RTP/DMR: Up to 60 Simultaneous sessions
Internal Storage	SATA Mobile Hard Disk Drive (Optional) SSD Storage Internal Storage for up to 600,000 calls
Archive Device Options	Network Archiving (NAS) USB Flash Drive USB HDD External DVD or Blu-ray Drive
Power Options	Universal 12V DC (5A) Power Pack (Included)
Dimensions	200mm x 66.1mm x 147 mm
Environmental Requirements	Operating Temperature: +0C (32F) to 40C (104F). Operating Humidity: 0-90% Relative Humidity, non-condensing.



Total Recall VR LinX Essence & LinX Essence GUI – Physical Interfaces